

3. Choralsinfonie

2. Satz In die Herrlichkeit
möcht ich gehn

Gerhard A. Spingath

Flöte 1

Oboe

Klar

Fagott

Tromp

Horn

Pösaune

Pauk schl

Viol. 1

Viol. 2

Viola

Cello

Kontrabaß

Flöte

9

Musical score for Flöte, Oboe, Klar, and Fagott. The Flöte part is mostly silent with rests. The Oboe part has a melodic line starting in the second measure. Klar and Fagott are silent.

Tromp

Musical score for Tromp and Horn. Tromp is silent. Horn has a melodic line starting in the fourth measure.

Pauk schl

Musical score for Pauk schl, which is silent throughout the page.

Viol. 1

Musical score for Viol. 1, featuring a melodic line with a slur and a fermata in the first measure.

Viol. 2

Musical score for Viol. 2, featuring a melodic line with a slur and a fermata in the first measure.

Viola

Musical score for Viola, featuring a melodic line with a slur and a fermata in the first measure.

Cello

Musical score for Cello, featuring a melodic line with a slur and a fermata in the first measure.


Kontrabaß

Musical score for Kontrabaß, featuring a melodic line with a slur and a fermata in the first measure.

This page of a musical score, page 13, features a variety of instruments. The Flöte (Flute) part is mostly silent, indicated by rests. The Oboe and Klarinetten (Clarinets) play melodic lines. The Fagott (Bassoon) provides a steady accompaniment. The Horns and Posaunen (Trumpets and Trombones) play harmonic support. The Pauk schl (Drum) part is silent. The Violins (Viol. 1 and Viol. 2) play a melodic line. The Viola, Cello, and Kontrabaß (Double Bass) provide a harmonic foundation. The score is written in a key signature of two flats and a common time signature.

Flöte

17



Oboe



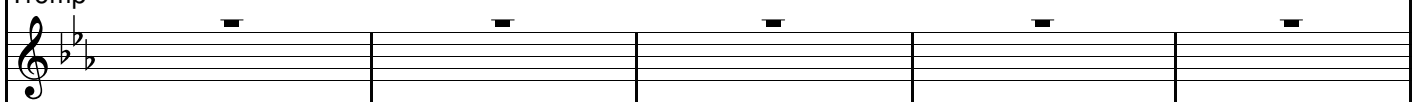
Klar



Fagott



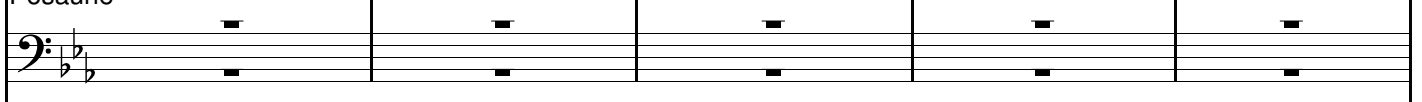
Tromp



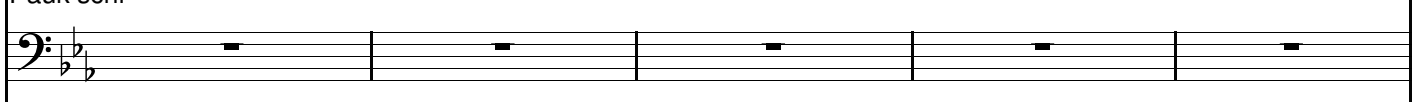
Horn



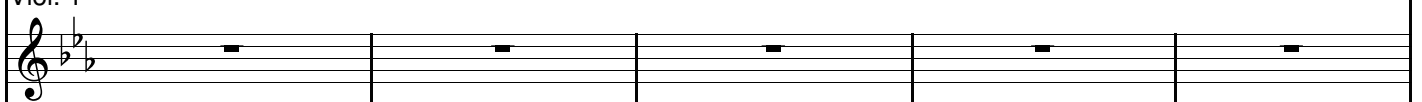
Posaune



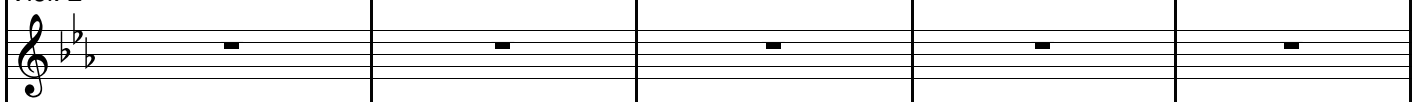
Pauk schl



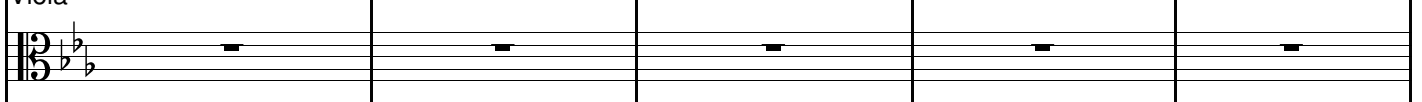
Viol. 1



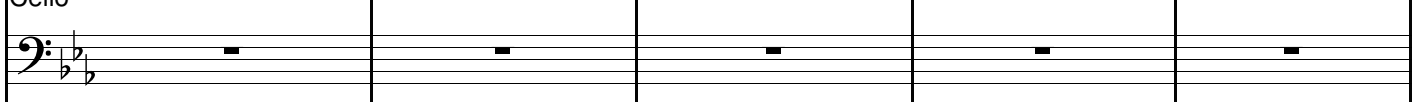
Viol. 2



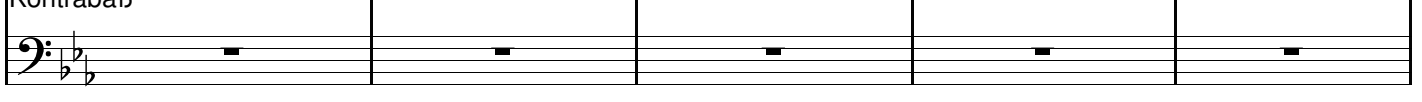
Viola



Cello



Kontrabaß



Flöte

Oboe

Klar

Fagott

Tromp

Horn

Posaune

Pauk schl

Viol. 1

Viol. 2

Viola

Cello

Kontrabaß

Flöte



Oboe



Klar



Fagott



Tromp



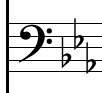
Horn



Posaune



Pauk schl



Viol. 1



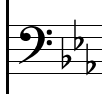
Viol. 2



Viola



Cello



Kontrabaß



Flöte

33

Oboe

Klar

Fagott

Tromp

Horn

Posaune

Pauk schl

Viol. 1

Viol. 2

Viola

Cello

Kontrabaß

Flöte

37

Oboe

Klar

Fagott

Tromp

Horn

Posaune

Pauk schl

Viol. 1

Viol. 2

Viola

Cello

Kontrabaß

Flöte

41

Oboe

Klar

Fagott

Tromp

Horn

Posaune

Pauk schl

Viol. 1

Viol. 2

Viola

Cello

Kontrabaß

Flöte

45

Oboe

Klar

Fagott

Tromp

Horn

Posaune

Pauk schl

Viol. 1

Viol. 2

Viola

Cello

Kontrabaß

Flöte

49

Musical staff for Flöte (Flute) showing notes and rests for measures 49-51. The staff is in treble clef with a key signature of two flats (B-flat and E-flat). Measure 49 starts with a whole note chord of G-flat, B-flat, and D-flat. Measure 50 continues with similar chords. Measure 51 features a half note G-flat followed by a quarter note B-flat and a quarter note D-flat.

Oboe

Musical staff for Oboe showing notes and rests for measures 49-51. The staff is in treble clef with a key signature of two flats. Measure 49 starts with a whole note chord of G-flat, B-flat, and D-flat. Measure 50 continues with similar chords. Measure 51 features a half note G-flat followed by a quarter note B-flat and a quarter note D-flat.

Klar

Musical staff for Klarinet (Clarinet) showing notes and rests for measures 49-51. The staff is in treble clef with a key signature of two flats. Measure 49 starts with a whole note chord of G-flat, B-flat, and D-flat. Measure 50 continues with similar chords. Measure 51 features a half note G-flat followed by a quarter note B-flat and a quarter note D-flat.

Fagott

Musical staff for Fagott (Bassoon) showing notes and rests for measures 49-51. The staff is in bass clef with a key signature of two flats. Measure 49 starts with a whole note chord of G-flat, B-flat, and D-flat. Measure 50 continues with similar chords. Measure 51 features a half note G-flat followed by a quarter note B-flat and a quarter note D-flat.

Tromp

Musical staff for Trompete (Trumpet) showing notes and rests for measures 49-51. The staff is in treble clef with a key signature of two flats. Measure 49 starts with a whole note chord of G-flat, B-flat, and D-flat. Measure 50 continues with similar chords. Measure 51 features a half note G-flat followed by a quarter note B-flat and a quarter note D-flat.

Horn

Musical staff for Horn showing notes and rests for measures 49-51. The staff is in treble clef with a key signature of two flats. Measure 49 starts with a whole note chord of G-flat, B-flat, and D-flat. Measure 50 continues with similar chords. Measure 51 features a half note G-flat followed by a quarter note B-flat and a quarter note D-flat.

Posaune

Musical staff for Posaune (Tuba) showing notes and rests for measures 49-51. The staff is in bass clef with a key signature of two flats. Measure 49 starts with a whole note chord of G-flat, B-flat, and D-flat. Measure 50 continues with similar chords. Measure 51 features a half note G-flat followed by a quarter note B-flat and a quarter note D-flat.

Pauk schl

Musical staff for Pauk schl (Snare Drum) showing rhythmic patterns for measures 49-51. The staff is in bass clef. Measure 49 has a quarter note followed by a quarter rest. Measure 50 has a quarter note followed by a quarter rest. Measure 51 has a quarter note followed by a quarter rest.

Viol. 1

Musical staff for Violin 1 showing notes and rests for measures 49-51. The staff is in treble clef with a key signature of two flats. Measure 49 starts with a whole note chord of G-flat, B-flat, and D-flat. Measure 50 continues with similar chords. Measure 51 features a half note G-flat followed by a quarter note B-flat and a quarter note D-flat.

Viol. 2

Musical staff for Violin 2 showing notes and rests for measures 49-51. The staff is in treble clef with a key signature of two flats. Measure 49 starts with a whole note chord of G-flat, B-flat, and D-flat. Measure 50 continues with similar chords. Measure 51 features a half note G-flat followed by a quarter note B-flat and a quarter note D-flat.

Viola

Musical staff for Viola showing notes and rests for measures 49-51. The staff is in alto clef with a key signature of two flats. Measure 49 starts with a whole note chord of G-flat, B-flat, and D-flat. Measure 50 continues with similar chords. Measure 51 features a half note G-flat followed by a quarter note B-flat and a quarter note D-flat.

Cello

Musical staff for Cello showing notes and rests for measures 49-51. The staff is in bass clef with a key signature of two flats. Measure 49 starts with a whole note chord of G-flat, B-flat, and D-flat. Measure 50 continues with similar chords. Measure 51 features a half note G-flat followed by a quarter note B-flat and a quarter note D-flat.

Kontrabaß

Musical staff for Kontrabaß (Double Bass) showing notes and rests for measures 49-51. The staff is in bass clef with a key signature of two flats. Measure 49 starts with a whole note chord of G-flat, B-flat, and D-flat. Measure 50 continues with similar chords. Measure 51 features a half note G-flat followed by a quarter note B-flat and a quarter note D-flat.